



-true historic European profile

Premier Steel Gutter System™
- the STEEL rainwater system

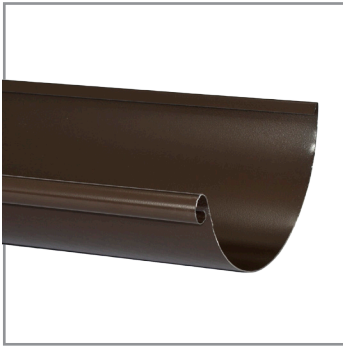


PREMIUM QUALITY PRODUCTS

SlateRoofWarehouse.com

PREMIER STEEL GUTTERS

True historic European half round profile



5", 6", & 7.6" Gutter



Gutter Connector
with Rubber Seal



Fascia Hanger



Fascia Hanger
Adjustable



Roof Hanger



Universal End Cap
with Rubber Seal



Star Outlet



Inside/Outside
Miters



Downspout



Downspout Bracket



Elbows



Elbow "Beaded"
(ground level)



2" Offset



Y-Pipe



Inline Cleanout



Downspout Connector

THE COMPLETE SYSTEM

-Prepainted 24 Gauge Zinc-magnesium coating



Ground Pipe Cover



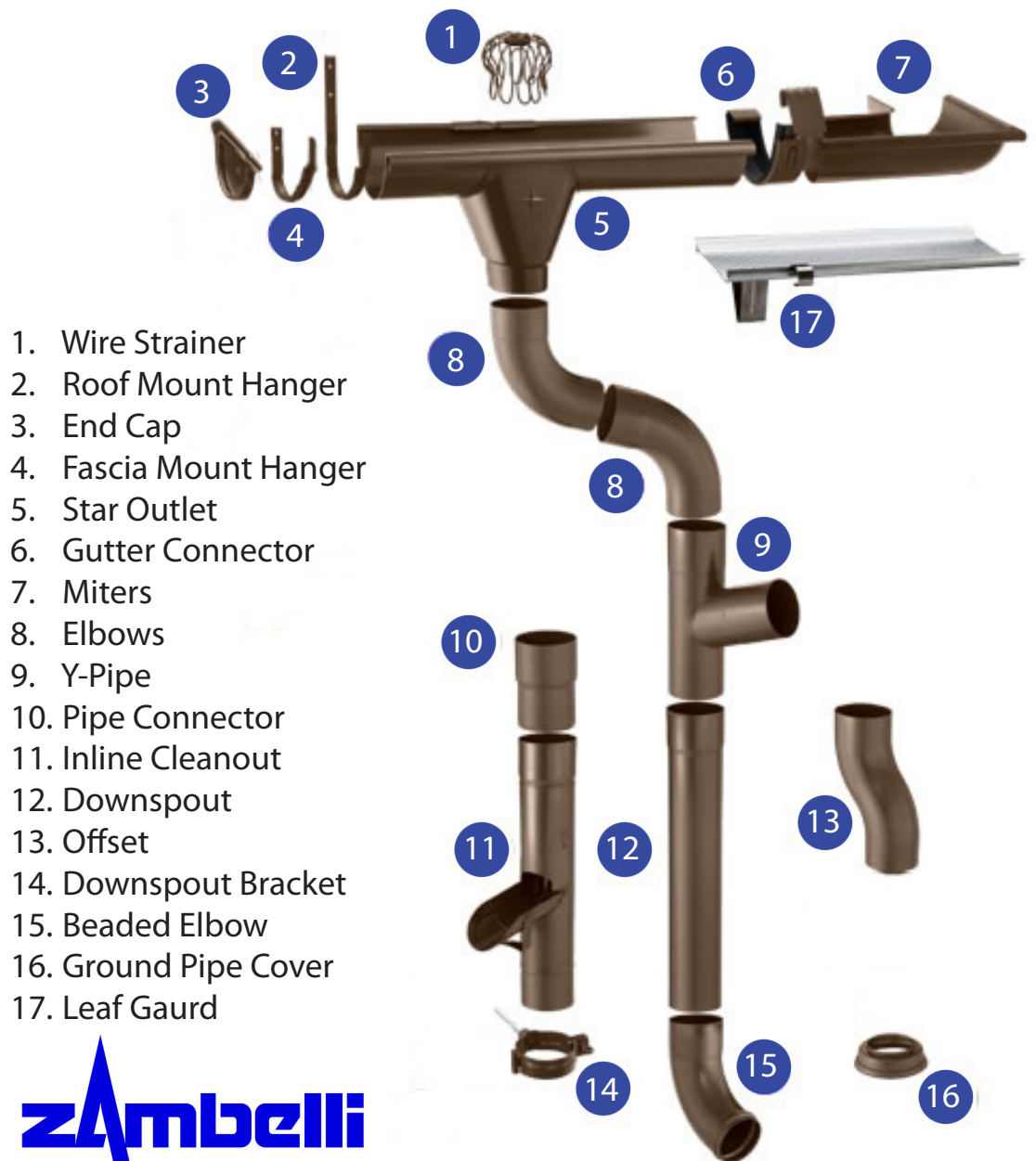
Wire Strainer



Stainless Screws



Touch Up Paint



1. Wire Strainer
2. Roof Mount Hanger
3. End Cap
4. Fascia Mount Hanger
5. Star Outlet
6. Gutter Connector
7. Miters
8. Elbows
9. Y-Pipe
10. Pipe Connector
11. Inline Cleanout
12. Downspout
13. Offset
14. Downspout Bracket
15. Beaded Elbow
16. Ground Pipe Cover
17. Leaf Gaurd



A Premier Steel Roof Drainage System combines maximum durability with a progressive, clean and modern look. Our steel roof drainage systems are made of a high strength, heavy 24 Gauge Zinc-magnesium coated Steel which provides quality, durability and value unsurpassed in the industry.



Flat End Cap with Rubber Seal

These ends are self sealing with an EPDM rubber seal that has 4 individual seals and are guaranteed leak-proof. They are Non-Handed & easily fitted with a single firm tap from a soft hammer.



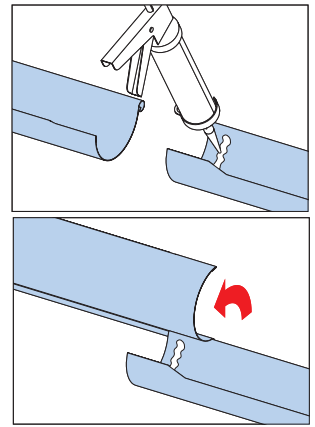
Gutter Conector with rubber seal

The gutter connector is easy to fit and allows the joining of two sections of gutter without the need for silicon or sealants. Simply leave a 1/8" to 1/4" gap between the two sections of gutter to be joined and connect using our easy to install gutter connector. The result is a very firm and durable connection. The EPDM seal is very long lasting and guaranteed leak-proof.



Plug-in Outlet

This versatile gutter outlet attaches quickly and easily without sealant or fasteners and ensures a perfect fit to the shape of the gutter.



Gutter Connection

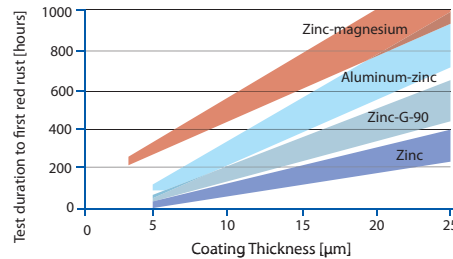
Sections of gutter can also be joined by using a silicon caulking/adhesive. The gutter should be overlapped by 2" and sealed with caulking/adhesive.

Paint Finish

**Proprietary scratch and fade resistant paint finish applied using exacting standards.

Zinc magnesium coating

Zinc-magnesium represents the newest advance in metallic coatings This superior coating provides up to 4 times the corrosion protection of G-90 galvanized.



Zinc-magnesium is an optimal anti-corrosion coating for steel. This outstanding protection is based on the effects of two significant mechanisms: **cathodic protection** and **barrier effect**. The general cathodic protection afforded by a zinc-magnesium coating is comparable with that of a conventional zinc coating. However – and this is what makes the difference – the zinc-magnesium-aluminium alloy additionally builds up a very dense and highly ordered oxide barrier layer against corrosion of the coated surface. It displays a significantly improved barrier effect against proceeding corrosion.

Excellent Barrier Effect

Zinc-magnesium coatings offer an additional important advantage in painted products. The zinc-magnesium complex reacts at cut edges or in scratches by forming a solid barrier layer. The result is that the reaction of oxygen and iron is slowed. Damages to the surface get in effect "healed".

Warranty

Premier Steel Gutter Systems have a 15 Year 100% Non Prorated Warranty.



SlateRoofWarehouse.com

143 Forest Ln., Grove City, PA 16127

Ph: 814-786-9085

Mail@JosephJenkins.com

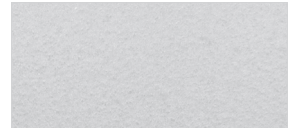
Extra durable proprietary paint finishes



Dark Bronze (DB)



Antique White (WT)



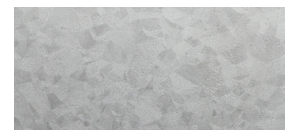
Natural Gray Metallic (NG)



Dark Charcoal (DC)



Black (BK)



Unpainted G-90 Galvanized (UZ)